

Products: SmartTrax™**Documentation:** See below

Product Launch Announcement

SmartTrax™ with ExactRead™ Technology

NOTE: Product Information Bulletins (PIBs) are prepared for the exclusive use of sales and sales support personnel. They should not be forwarded directly to customers or potential customers. You are encouraged to use appropriate information from the PIB to prepare your sales and promotional materials.

Dear Colleagues,

We are proud to announce the next advancement in McCrometer's connected solutions portfolio. The new SmartTrax™ telemetry unit is available for purchase today.

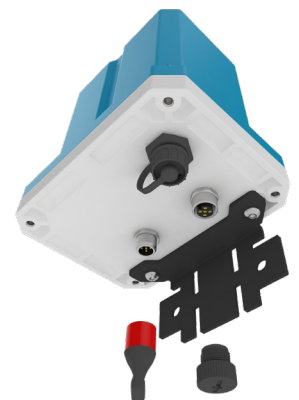
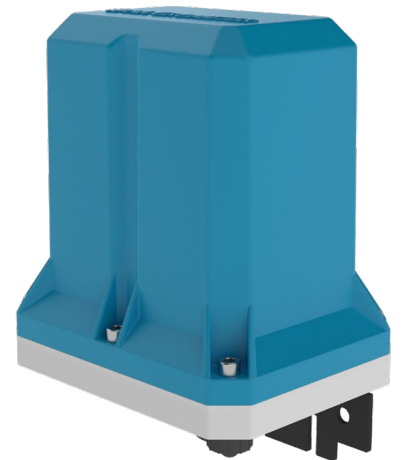
SmartTrax™ Product Overview

SmartTrax™ provides remote meter/sensor readings at an economical price point. This product is streamlined, simple to use, and keeps users informed with minimal effort. This highly compatible telemetry unit gives users confidence in their flow monitoring, saves money, time and resources while providing efficient data, resulting in effective resource allocation.

SmartTrax™ will also assist users in easily meeting regulatory requirements, properly manage resources, and make informed decisions about daily water usage. SmartTrax™ with ExactRead™ technology gives users confidence in data integrity, as the totalizer will also be an exact match from the meter to the website.

SmartTrax™ Compatibility

McCrometer's SmartTrax™ telemetry unit is compatible with McPropeller, Water Specialties Propeller, UltraMag, DuraMag, FPI Mag and more. This unit can even be partnered with competitive brand meters. SmartTrax™ only requires an output and it can communicate with your meter/sensor. Pulse output, 4-20mA and AMI/AMR are all compatible for this versatile unit. SmartTrax™ can also take one additional sensor input such as pressure sensors and more. It will accept a 5V input and transmit that data, along with your flow data via our website.



SmartTrax™ Features & Benefits

- Trusted Connectivity- Stay connected with redundant coverage that is agnostic to cell carrier.
- Durable Design – Built-in internal antenna eliminates breaks and reduces water intrusion.
- Power that Lasts- Battery and rechargeable battery options with solar panel available to keep data flowing.
- Reliable Data – Never second guess data usage as the reading will always match and be delivered wirelessly.
- Low Maintenance – Remote firmware updates mean you won't need to visit the unit to receive the latest and greatest updates to the units. Updates are done over the air within seconds to ensure there is no interruption in data.
- Brand and Technology Agnostic - SmartTrax™ can be used with any meter that has an output, including other meter brands, mechanical meters, and electromagnetic meters.
- Retrofit – You can pair SmartTrax™ with meters/sensor already in the field. Or you can purchase when you buy new flow meters.
- One-piece Design – Durable, affordable and hassle free!

SmartTrax™ Configurations and Options

SmartTrax™ can be purchased as battery powered, or with rechargeable batteries that work with our solar panels. This unit can also take a DC power input and covers varying lengths of cable to accommodate your installation.

SmartTrax™ Product Support Videos

We have an introduction video for you to view. To view SmartTrax™ introduction video and so many more please visit our channel www.youtube.com/mccrometer . In the future we will be creating even more product support videos for SmartTrax™ including start-up/activation processes as well as battery replacement. Have any other ideas for product support videos for SmartTrax™? We'd love to hear about them, please email me directly at aimeed@mccrometer.com.

SmartTrax™ Pricing

SmartTrax™ has been designed specifically for our customers to receive more economical price points for connected solutions. We've also been able to significantly reduce the hosting and data fees for this telemetry unit.

The screenshot shows a configuration menu for the SmartTrax™ unit. At the top, it says 'STX -'. Below that, there are two dropdown menus. The first is labeled 'Converter Mounting Options' and has a 'Please Select Value' dropdown. The second is labeled 'Converter Power Options' and has a 'Please Select Value' dropdown. The 'Converter Mounting Options' dropdown is currently open, showing the following options: 'Battery Power (Standard)' (B), 'Solar Power, 2.4 Watts Panel, 6 ft cable, Battery Backup' (S), 'Solar Power, 5.1 Watts Panel, 6 ft cable, Battery Backup' (W), 'DC Power input, 25 ft cable, Battery Backup' (F), and 'DC Power input, 50 ft cable, Battery Backup' (G). The 'Converter Power Options' dropdown is also open, showing the following options: '6 ft (Open Leads)' (1), '25 ft (Open Leads)' (2), and '50 ft (Open Leads)' (3).

To view our pricelist, find helpful tools, and download product images, please log in to the Partnership Portal located on our website or reach out to your Regional Sales Manager for pricing information.



Don't have access? Don't worry. Simply click the request access button and you'll be contacted shortly so that you can enjoy all the benefits of the McCrometer Partnership portal.

SmartTrax™ Product Documentation

SmartTrax™ Telemetry unit documents are available for your use on the McCrometer Website:

- 30125-82 SmartTrax™ IOM Manual
- 30126-27 SmartTrax™ Battery Installation
- 30126-55 SmartTrax™ Sales Brochure
- 30126-64 SmartTrax™ Price List



As stated above, the price list is available on the McCrometer Partnership.

Learn More about SmartTrax™

We have multiple ways for you to learn more about this exciting new addition to our connected solutions portfolio. Please select any, or all the below options.

- Visit our website at www.mccrometer.com to view the SmartTrax™ Product Page
- Visit our YouTube Channel at www.youtube.com/mccrometer
- Reach out to your McCrometer Regional Sales Manager
- Or reach out to me directly at aimeed@mccrometer.com

Kind regards,
Aimee Davis
Vertical Market Manager, Agriculture
McCrometer, Inc